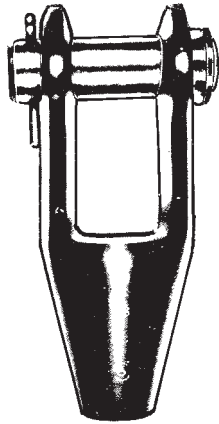
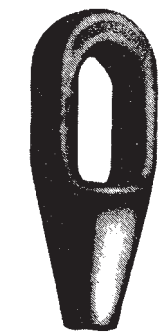
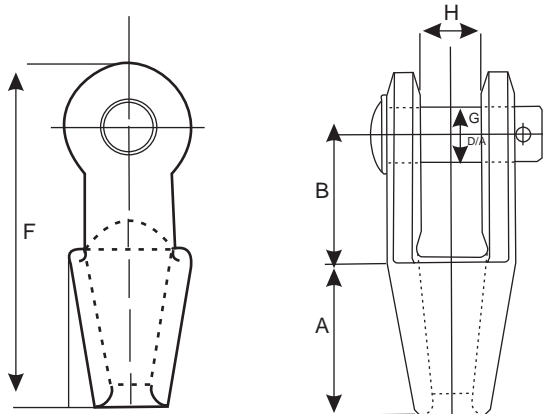


FITTINGS

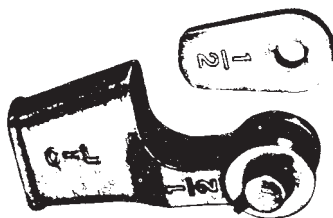
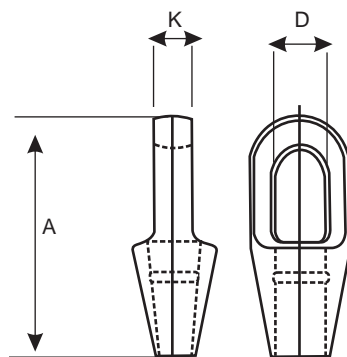
SOCKETS FOR WIRE ROPES



Open Socket



Closed Sockets



Wedge Sockets

OPEN SOCKETS TO: BSS 463 : 1958

Diameter of rope (mm)	A (mm)	B (mm)	F (mm)	G (mm)	H (mm)
8	43	31	89	13	16
10	51	43	113	16	22
13	60	52	135	21	28
16	70	63	159	24	32
19	76	67	175	29	38
22	85	76	197	32	43
26	105	89	236	38	48
28	114	101	262	41	51
32	133	111	297	48	54
35	152	114	330	57	65
38	152	114	330	57	65

GALVANISED OPEN SPELTER SOCKETS

Diameter of rope (mm)	A (mm)	B (mm)	F (mm)	G (mm)	H (mm)
24-26	114	102	268	51	51
32	140	127	335	64	64
38	152	152	384	70	76
44-48	191	178	464	89	89
51-54	216	229	546	95	102
57-60	229	254	597	108	114
64-67	248	273	648	121	127

GALVANISED CLOSED SPELTER SOCKETS

Diameter of rope (mm)	A (mm)	D (mm)	K (mm)
11-13	140	28	22
20	194	41	32
22	225	48	38
26	254	57	44
32	313	70	57
38	359	80	64
44	445	90	76

WEDGE SOCKETS - Sizes available: (Dimensions in mm)

	10	13	16	20	22	26	28	32
OPEN	10	13	16	20	22	26	28	32
CLOSED	10	13	16	20	22	26	28	32

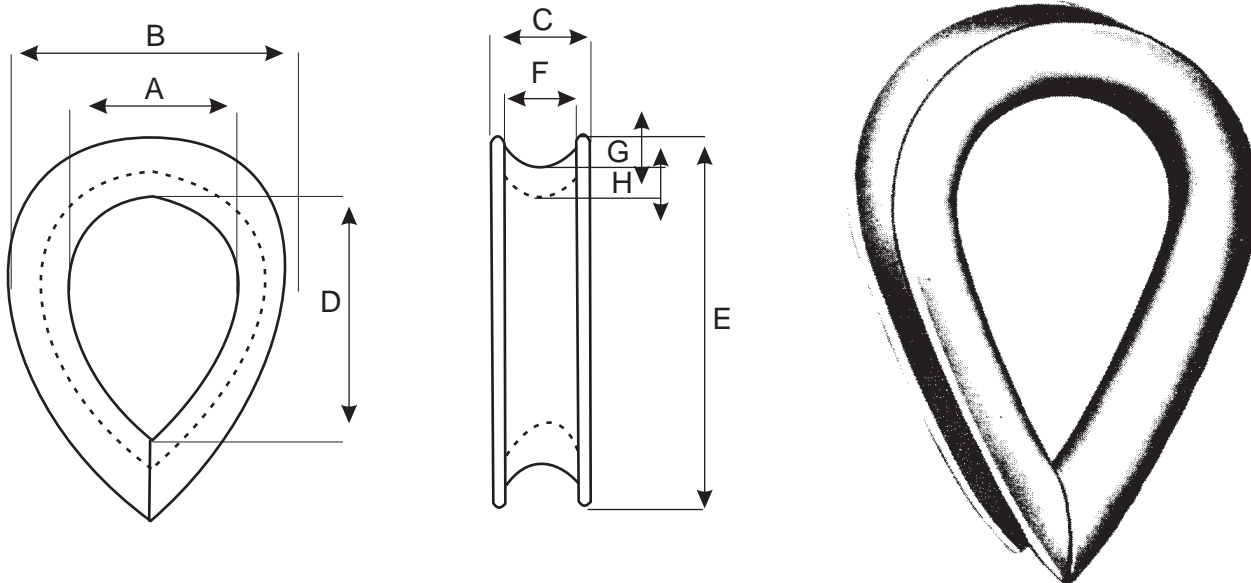
FITTINGS

THIMBLES

BS 464 - HEAVY DUTY GALVANISED

Diameter of rope		A	B	C	D	E	F	G	H
(mm)	in								
6	¼	17	37	11	26	47	7	5	5
8	⅝	22	44	13	33	57	9	5	5
10	⅜	29	49	17	42	63	12	5	5
13	½	32	64	22	45	82	16	9	7
16	⅝	41	75	24	61	98	18	11	8
20	¾	50	93	30	73	120	23	13	9
22	⅞	57	105	32	81	137	25	14	11
25	1	65	110	35	103	165	28	14	12
28	1⅙	75	130	39	115	180	31	16	13
32	1¼	94	146	42	134	195	35	16	13

Subject to commercial tolerances



FITTINGS

ROPE CLAMPS * SHACKLES



**GALVANISED
DROP-FORGED
ROPE CLAMPS
TO FCC-450**



**GALVANISED
MALLEABLE CAST
ROPE CLAMPS
(BULLDOG TYPE)
TO FCC-450**



**GALVANISED AND
STAINLESS STEEL
MALLEABLE CAST
ROPE CLAMPS
(COMMERCIAL TYPE)
TO DIN741**



**GALVANISED
STAINLESS STEEL
AND EXTRA LONG STAINLESS STEEL
COMMERCIAL DEE SHACKLES**

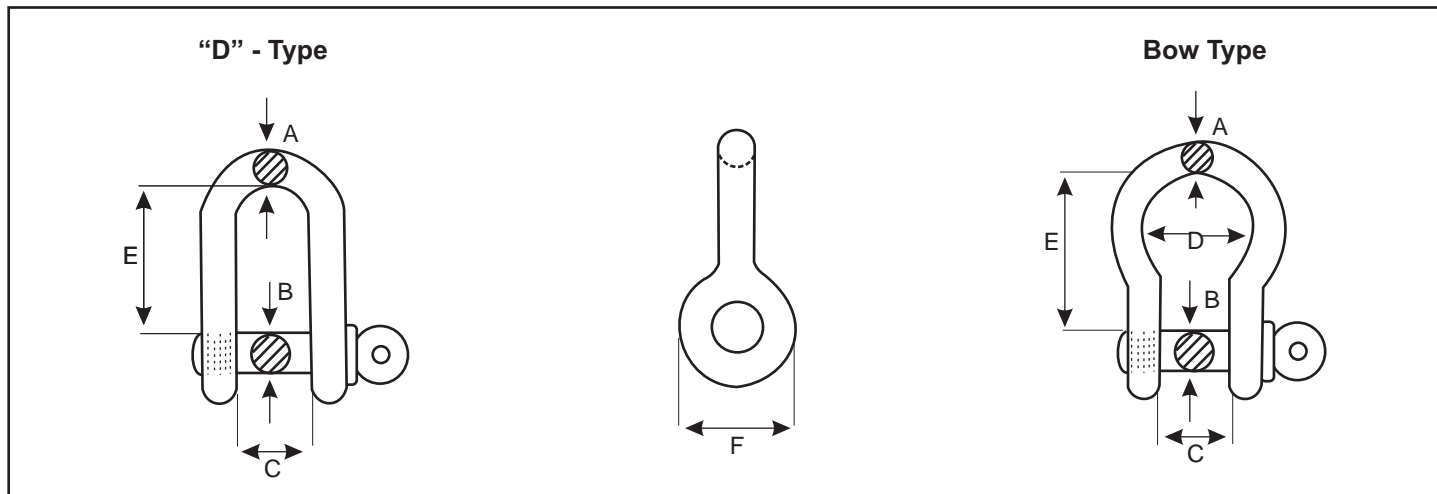


**GALVANISED
AND STAINLESS STEEL
COMMERCIAL BOW SHACKLES**

**COMMERCIAL SHACKLES ARE NOT SUITABLE
FOR LIFTING APPLICATIONS**

FITTINGS

ALLOY PIN "D" AND BOW SHACKLES WITH SCREWPIN TO U.S. FEDERAL SPECIFICATION RR-C-271B



Approx dimensions in mm

* SWL	A	B	C	BOW ONLY D	"D" ONLY E	BOW ONLY E	F
0.5	6	8	12	19	23	27	20
1	10	11	17	26	33	37	26
1.5	11	13	18	29	37	44	29
2	13	16	20	33	46	48	33
3.25	16	20	27	43	52	61	43
4.75	20	22	30	51	61	71	51
6.5	22	25	36	58	76	84	58
8.5	25	28	44	67	83	95	68
9.5	28	32	47	73	91	107	74
12	32	35	52	81	101	119	83
13.5	35	38	58	91	118	134	92
17	38	42	61	98	125	144	98
25	44	51	74	126	150	180	127
35	51	56	85	143	170	197	146
55	64	70	105	184	203	267	184

* Safe Working Load stamped on shackle

SAFETY FACTOR 6:1

FITTINGS



DROP-FORGED EYEBOLTS

to British Standard Specifications
(Ungalvanised)



WITH METRIC THREADS TO BSS 4278 TABLE 1

Thread diameter mm	Safe Working Load at 0° kg	Inside Eye diameter mm	Eye Material diameter mm	Shank length mm	Thread length mm	Approx weight kg
6	100	15	9	21	17	0.07
8	150	14	9	18	13	0.08
10	33	15	9	19	15	0.08
12	400	15	9	19	15	0.09
14	500	20	12	22	17	0.22
16	800	20	12	22	17	0.23
18	1200	24	15	29	24	0.34
20	1600	27	16	31	24	0.45
22	1600	28	16	32	24	0.54
24	2500	35	21	40	34	0.91
27	2500	37	22	44	37	1.64
30	4000	43	26	50	40	1.71
33	4000	44	28	52	44	2.88
36	6300	54	32	65	57	3.29
39	6300	55	34	70	60	5.04
42	8000	60	36	75	64	6.24
45	8000	65	40	80	68	7.16
48	10000	65	40	80	68	7.60
52	12500	73	48	88	75	10.18
56	16000	82	51	108	93	15.22
64	20000	90	57	115	100	19.50
72	25000	113	68	137	110	30
76	25000	115	68	137	110	30

WITH BSW THREADS TO BSS 529 PART 1

Thread diameter ins	Safe Working Load at 0° kg	Inside Eye diameter mm	Eye Material diameter mm	Shank length mm	Thread length mm	Approx weight kg
3/8	250	14	9	17	14	0.06
1/2	500	19	11	25	20	0.12
5/8	900	24	14	30	23	0.25
3/4	1400	28	17	34	27	0.45
7/8	2000	33	20	41	31	0.63
1	2750	38	22	44	36	1.05
1-1/8	3500	44	26	53	46	1.60
1-1/4	4500	47	30	59	49	3.14
1-1/2	6500	54	34	70	59	4.56
1-3/4	9000	66	39	82	68	5.60
2	12000	72	47	93	78	9.10
2-1/4	15000	82	54	100	88	15.00
2-1/2	20000	92	58	112	98	17.70

British standard eyebolts may be used to lift inclined loads. The safe working load per eyebolt will be reduced by approximately 65% for angles of 30° and approximately 75% for angles of 45°

FITTINGS



DROP-FORGED EYEBOLTS



to DIN 580 (Galvanised)

Thread diameter mm	Safe Working Load at 0° kg	Inside Eye diameter mm	Eye Material diameter mm	Shank length mm	Thread length mm	Approx weight kg
6	70	15	6	11	9	0.05
8	140	19	8	12	9	0.06
10	230	24	10	16	13	0.11
12	340	29	11	20	17	0.18
14	490	34	14	26	22	0.28
16	700	34	14	27	22	0.32
18	850	40	16	29	25	0.35
20	1200	39	16	30	25	0.45
22	1500	44	19	32	28	0.63
24	1800	49	20	36	30	0.76
30	3600	59	25	46	38	1.88
33	4300	59	25	46	38	2.16
36	5100	70	27	60	51	2.92
42	7000	80	31	65	58	4.03
45	8000	89	38	67	57	6.00
48	8600	90	40	70	60	6.38
56	11500	109	47	83	70	8.80
64	16000	109	47	90	75	12.40
72	21000	138	62	100	86	20.80

to DIN 582 (Galvanised)

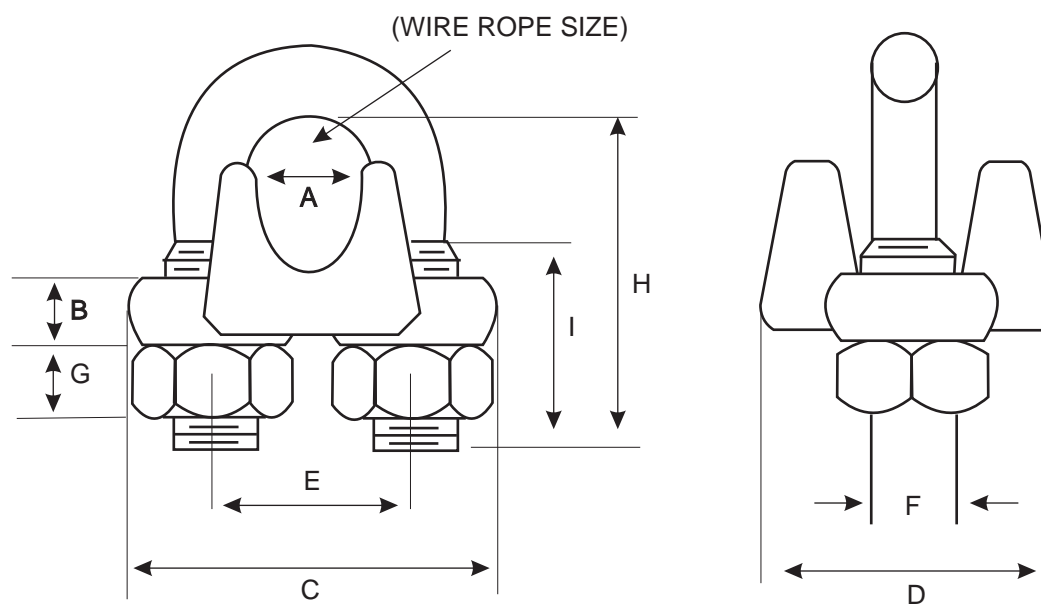
Thread diameter mm	Safe Working Load at 0° kg	Inside Eye diameter mm	Eye Material diameter mm	Base diameter mm	Thread length mm	Approx weight kg
6	70	19	8	20	10	0.05
8	140	19	8	20	10	0.05
10	230	24	10	25	12	0.09
12	340	29	11	29	13	0.16
14	490	34	14	34	14	0.24
16	700	34	14	34	16	0.24
18	850	39	18	41	20	0.30
20	1200	39	16	40	19	0.36
22	1500	44	18	45	19	0.55
24	1800	49	20	51	23	0.67
30	3600	59	25	67	27	1.32
33	4300	59	26	67	27	1.88
36	5100	70	30	75	32	2.08
42	7000	80	30	86	39	3.20
45	8000	89	38	98	39	5.00
48	8600	90	38	96	51	5.00
56	11500	109	46	112	58	6.95
64	16000	109	46	112	58	9.80
72	21000	138	63	153	64	19.00

STAINLESS STEEL EYEBOLTS AND EYENUTS AVAILABLE IN 6, 8, 10, 12, 14, 16, 20, 22 AND 24mm THREAD SIZES

FITTINGS

HEAVY DUTY CLAMPS

DROP FORGED STEEL GALVANISED
SPECIFICATION US FED SPEC 450 TYPE 1 CLASS 1



Approximate dimensions in mm								
A	B	C	D	E	F	G	H	I
6	6	36	30	20	8	8	28	18
8	8	43	34	22	9	9	38	23
10	9	50	41	25	11	11	40	23
13	11	57	48	31	12	12	51	27
16	12	65	53	34	14	13	63	35
20	13	72	57	40	16	15	68	40
22	14	80	63	44	18	17	83	44
26	15	88	68	49	18	19	95	51
28	17	91	74	52	20	20	98	53
32	20	105	79	60	22	22	112	54
38	24	113	85	68	22	22	125	60

FITTINGS

TURNBUCKLES

DROP-FORGED TO DIN 1480



EYE AND EYE



HOOK AND EYE



HOOK AND HOOK

Thread diameter mm	Body length mm	Approximate take-up mm	Eye inside diameter mm	Hook throat opening mm	Overall closed length mm	Overall open length mm	Safe working load kg	Approximate weight kg
6	110	85	8	8	170	250	220	0.10
8	110	80	10	10	180	260	410	0.17
10	125	85	12	12	210	300	660	0.29
12	125	80	17	15	225	320	940	0.45
14	140	92	17	18	265	355	1320	0.61
16	170	115	19	20	305	420	1800	0.95
20	200	130	24	22	360	480	2750	1.85
22	220	145	28	24	400	545	3300	2.20
24	250	170	28	28	440	610	4000	3.15
30	250	170	30	29	480	640	6620	5.25
36	290	180	48	29	550	720	9280	8.00
42	330	205	48	46	675	870	13200	13.00
48	350	200	55	55	730	900	16800	25.00

DROP-FORGED TO DIN 1480 WITH WELDABLE ENDS



AVAILABLE IN 6, 8, 10, 12, 14, 16, 20, 22, 24, 30 and 36 mm THREAD SIZES

DIE - CAST

EYE AND EYE

HOOK AND EYE

HOOK AND HOOK

Thread diameter mm	Body length mm	Approximate take-up mm	Eye inside diameter mm	Hook throat opening mm	Overall closed length mm	Overall open length mm	Approximate weight kg
4	45	34	7	7	83	117	0.03
5	70	50	8	7	110	160	0.04
6	100	70	10	8	156	226	0.07
8	110	80	11	9	180	260	0.15
10	120	89	16	13	204	293	0.25
12	130	89	18	17	240	329	0.36

DIE - CAST

EYE AND EYE

HOOK AND EYE

HOOK AND HOOK

AVAILABLE IN 5, 6, 8, 10, 12, and 36 mm THREAD SIZES

FITTINGS

WIRE GRIPS



1t SD GRIP WITH SAFETY LATCH
2.6 TO 15mm



0.5t MINI-GRIP
1 to 9.5mm



2t LARGE EYE GRIP WITH SAFETY LATCH
4 to 22mm



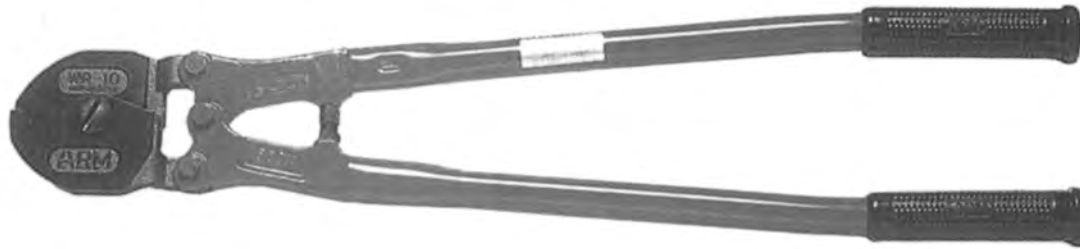
3t LARGE EYE GRIP WITH SAFETY LATCH
16 to 32mm



4t GRIP
WITH SAFETY LATCH
13 to 28mm

FITTINGS

ROPE CUTTERS



MODEL WR-10 CUTS UP TO 10mm ROPE
MODEL WR-16 CUTS UP TO 16mm ROPE



MODEL RC-8 CUTS UP TO 5mm ROPE



SPARE BLADE KITS

ROPE SWAGERS



MODEL HSC-350 SWAGES 1.5mm TO 3.5mm ROPE
MODEL HSC-600 SWAGES 1.5mm TO 5mm ROPE

LEVER PULLERS



FITTED WITH 3m OF 5mm STEEL WIRE ROPE
NOT TO BE USED FOR LIFTING