

# LEVER HOISTS

## MAXIPULL LEVER PULL

These blocks have been tried and tested in the tough ship-building industry, and are heavy duty units able to cope with hard South African conditions. They are manufactured to ISO 9002 certified quality system standards.

### FEATURES INCLUDE :

- \* Forged steel welded hook casings in place of cast casings.
- \* Fast free-wheeling system, ensuring minimum operating time.
- \* Forged steel, heat treated load sheaves for longer service and high fatigue resistance.
- \* Fail-safe mechanisms to prevent loads from slipping or falling.

### SPECIFICATIONS



Model	Capacity (ton)	Load Chain Falls	Levering Effort (kg)	Drawn-up Height (mm)	Weight c/w 3M pull (kg)
MINIPULL DLS-50	0.75	1	16	330	8
81015	1.5	1	21	370	13
81030	3	1	34	450	22
81060	6	2	36	580	37

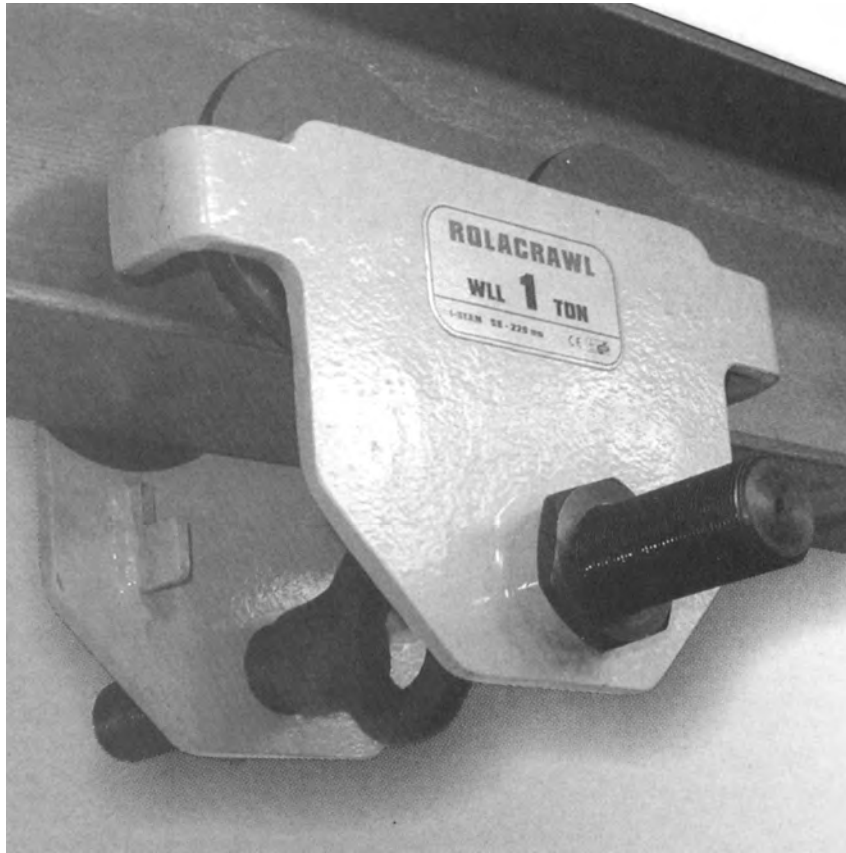
SEE FOLLOWING PAGE FOR PARTS LIST



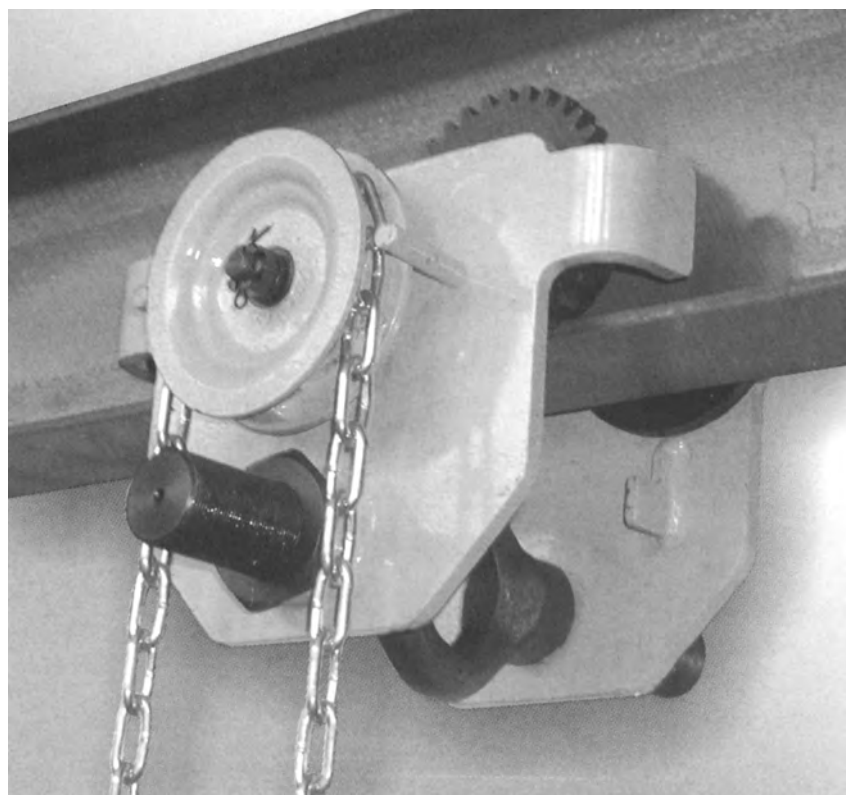
# CRAWLS

## ROLACRAWLS

**PLAIN**

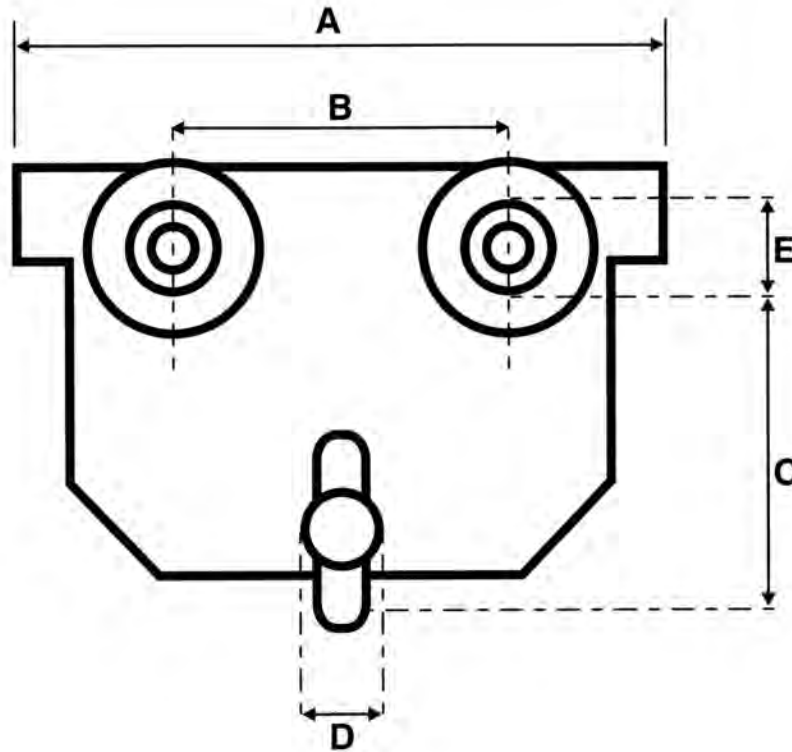


**GEARED**



# CRAWLS

## ADJUSTABLE PLAIN TROLLEY



SPECIFICATIONS		CAPACITY					
		½ t	1 t	2 t	3 t	5 t	
<b>A</b>	Overall length	198 mm	245 mm	277 mm	330 mm	380 mm	
<b>B</b>	Distance between axles (centre to centre)	100 mm	120 mm	130 mm	160 mm	170 mm	
<b>C</b>	Distance between beam base and hook bearing point	80 mm	105 mm	125 mm	150 mm	160 mm	
<b>D</b>	Shaft diameter	24 mm	30 mm	36 mm	41 mm	47 mm	
<b>E</b>	Load wheel diameter (at load-bearing surface)	55 mm	67 mm	80 mm	100 mm	110 mm	
<b>1</b>	Side plate thickness	6 mm	8 mm	10 mm	12 mm	16 mm	
<b>2</b>	Weight	Plain	5 kg	9 kg	14.5 kg	23.5 kg	36.5 kg
		Geared	N/A	10 kg	15.5 kg	25 kg	38.5 kg
<b>3</b>	To fit beam width	Minimum	50 mm	58 mm	66 mm	74 mm	90 mm
		Maximum	220 mm	220 mm	220 mm	220mm	220 mm
<b>4</b>	Minimum radius	1.3 m	1.3m	1.5 m	2 m	2.5 m	